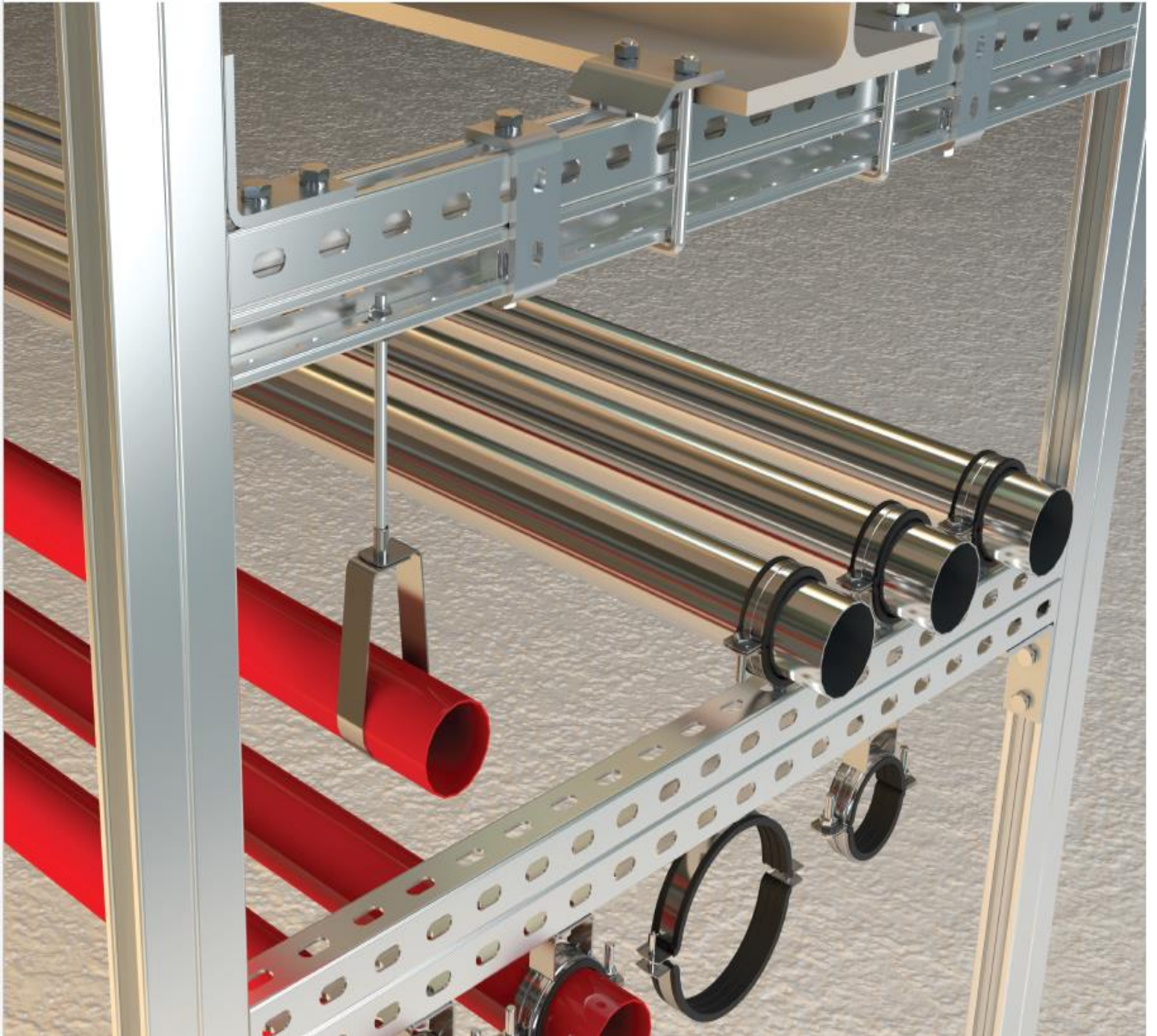


HADID

Global Limited

Electro-Mechanical Support Systems





ELECTRO-MECHANICAL SUPPORT SYSTEMS

ABOUT US...

Hadid Global Limited is an engineering product and equipment supplier. We also provide engineering solutions tailored to our customer's. Our director are from diverse engineering background including Mechanical, Civil, Electrical, IPE, Environment, Fire Protection Engineering, Energy Management and Waste Water Management.

Supplying our customers with products of the right quality is our prime objective.

We provide products and engineering solutions to our valued customers in textiles & RMG, Oil & Gas, Mining, Marine, Energy, Waste & Water Management, Commercial Buildings (commercial, industrial and residential) and Transport sectors.

Our Long-term goal is to manufacture, assemble and supply engineering products in near future to meet the growing demand of our valuable customers.

This catalogue includes a short list of our product ranges. We highly appreciate your kind support by providing business inquiries. We also appreciate your valuable suggestions for our continual improvement.

We would like to invite you to visit our showroom at Nawabpur and our corporate office at Uttara. You can visit our website (www.hadidglobal.com.bd) and E-Commerce site (www.engineershopbd.com)

Thanking you.

Dr. Taria Bin Yousuf

B.Sc. in Civil Engineering (BUET)

Chairman (HADID GLOBAL LIMITED)

CONTENT

■ Consumable Items (Ready Stock)

- Nuts & Bolt, Washer (Supporting items)

■ Hanging Support (Clamps & Supporting)

- Clamps & Support
- Cutting, Drilling & Polishing
- Paints, Glue & Instruments
- Electric Cables & Supporting
- Adhesives & Tapes

■ Tools & Machineries (Ready Stock)

- Electrical
- Mechanical

■ Copper, Insulation & Refrigerant

- Copper, Insulation & Refrigerant

■ Make to Order

■ Others

**“SUPPLYING OUR CUSTOMERS WITH PRODUCTS
OF THE RIGHT QUALITY IS OUR PRIME OBJECTIVE”**

Consumable Items (Ready Stock)

Nuts & Bolt, Washer (Supporting items)

>>> MS Royal Bolt

IP 1001MRB

Description	Dia	Length	Dia	Length	Dia	Length
Local or China	8mm	70mm	12mm	70mm	16mm	70mm
Golden Body & Golden Cover	8mm	100mm	12mm	100mm	16mm	100mm
Back Body & Golden Cover	8mm	120mm	12mm	120mm	16mm	120mm
	8mm	140mm	12mm	140mm	16mm	140mm
	8mm	200mm	12mm	200mm	16mm	200mm
	10mm	70mm	14mm	70mm	18mm	70mm
	10mm	100mm	14mm	100mm	18mm	100mm
	10mm	120mm	14mm	120mm	18mm	120mm
	10mm	140mm	14mm	140mm	18mm	140mm
	10mm	200mm	14mm	200mm	18mm	200mm



>>> Joint Nut / Nut Bolt

IP 1002JNB

Description
Available all size
China Or Local
MS Or SS



>>> SS Royal Bolt

IP 1003SRB

Description	Dia	Length	Dia	Length	Dia	Length
Local Or China	8mm	70mm	12mm	70mm	16mm	70mm
Original SS	8mm	100mm	12mm	100mm	16mm	100mm
MS Body but SS Color	8mm	120mm	12mm	120mm	16mm	120mm
	8mm	140mm	12mm	140mm	16mm	140mm
	8mm	200mm	12mm	200mm	16mm <td 200mm	
	10mm	70mm	14mm	70mm	18mm	70mm
	10mm	100mm	14mm	100mm	18mm	100mm
	10mm	120mm	14mm	120mm	18mm	120mm
	10mm	140mm	14mm	140mm	18mm	140mm
	10mm	200mm	14mm	200mm	18mm	200mm



>>> Bolt

IP 1004BL

Description
Available all size
China Or Bangla
MS Or SS



>>> Nut

IP 1005NT

Description
Available all size
China Or Local
SS Or MS



>>> Anchor / Hilty Royal Bolt

IP 1006AB

Description	Dia	Length	Dia	Length	Dia	Length
Local Or China	8mm	70mm	12mm	70mm	16mm	70mm
Original SS	8mm	100mm	12mm	100mm	16mm	100mm
MS Body but SS Color	8mm	120mm	12mm	120mm	16mm	120mm
	8mm	140mm	12mm	140mm	16mm	140mm
	8mm	200mm	12mm	200mm	16mm	200mm
	10mm	70mm	14mm	70mm	18mm	70mm
	10mm	100mm	14mm	100mm	18mm	100mm
	10mm	120mm	14mm	120mm	18mm	120mm
	10mm	140mm	14mm	140mm	18mm	140mm
	10mm	200mm	14mm	200mm	18mm	200mm



Hanging Support (Clamps & Supporting)

Clamps & Support

>>> U Bolt / U Clamp

IP 1007UB



Available Size	Description
2", 3", 4", 6", 8", 10", 12"	MS Body but SS Color

>>> Hose Clamp

IP 1008HC



Available Size	Description
1", 1.5", 2", 2.5", 3", 4", 6", 8"	MS Body but SS Color MS & SS

>>> Swivel Loop Hanger

IP 1009SLH



Available Size	Description
1", 2", 3", 4", 6", 8", 10"	MS Body but SS Color

>>> Unifix

IP 1010UF



Available Size	Description
6", 8", 10", 12", 16"	MS Body Or SS Body

>>> Cot Screw with Washer

IP 1011CS

Available Size	Description	Color
1", 1.5", 2", 2.5", 3"	Cot Screw with foam washer (MS)	Golden
	Cot Screw with Rubber washer (MS)	SS
	Cot Screw with plastic washer (MS)	



>>> Thread Rod

IP 1012TR



Available Size	Description
6", 8", 10", 12", 16"	MS Body Or SS Body

>>> Royal Plug

IP 1013RP



Available Size	Description
1", 1.5", 2", 2.5", 3"	China Or Local

>>> PP Belt

IP 1014PB



>>> G.I Ware

IP 1015GW



Available Size
16 No.
22 No.

Clamps & Support

>>> **PP Clip**
IP 1016PC



>>> **PP Belt Carton Strapping Machine**
IP 1017SM



>>> **T Head Bolt**
IP 1018HB



>>> **Button Head Screw**
IP 1019BHS



>>> **Truss Head Screw**
IP 1020THS



>>> **Flange Serrated Nut**
IP 1021FSN



>>> **Square Nut**
IP 1022SN



>>> **Socket Head Bolt**
IP 1023SHB



>>> **Hex Head Bolt**
IP 1024HHB



>>> **Wing Nut**
IP 1025WN



>>> **Shear Nut**
IP 1026SN



>>> **Eye Bolt**
IP 1027EB



>>> **Carriage Bolt**
IP 1028CB



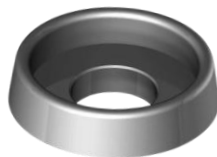
>>> **Head Self Drilling Screw**
IP 1029HSDS



>>> **Spring Washer**
IP 1030SW



>>> **Cup Washer**
IP 1031CW



>>> **Tooth Lock Washer**
IP 1032TLW



>>> **Flat Washer**
IP 1033FW



Description

Available all size

China Or Local

Consumable Items
(Ready Stock)

Hanging Support
(Clamps & Supporting)

Tools & Machineries
(Ready Stock)

Copper, Insulation
& Refrigerant

Make to Order

Others

Clamps & Support

>>> M.S Angle

IP 1034MSA

Available Size	Available Brand
1.5" x 1.5" x 3mm	BSRM
1.5" x 1.5" x 4mm	VSL
2" x 2" x 3mm	Rahim SSL



>>> GP Sheet

IP 1037GS



Description
22 SWG
Pata Or Non Pata

>>> Aluminium U Chanel

IP 1039AUC



Description
Long 8 feet

>>> Duct Insulation

IP 1035DI



Description
Aluminium Foil With Self Adhesive

>>> Flat Bar

IP 1036FB

Description	Available Size
ABS	1" x 2 mm
Non ABS	1.5" x 2 mm
	1" x 3 mm
	1" x 4 mm
	1" x 5 mm
	1.5" x 3 mm
	1.5" x 4 mm
	1.5" x 5 mm
	2" x 4 mm
	3" x 5 mm
	4" x 6 mm



>>> G.I Mesh

IP 1038GIM



Available Size
4' x 8'
2' x 3'

>>> Aluminium Sheet

IP 1040AS



Description
22 SWG
Pata Or Non Pata

Consumable Items
(Ready Stock)

Hanging Support
(Clamps & Supporting)

Tools & Machineries
(Ready Stock)

Copper, Insulation
& Refrigerant

Make to Order

Others

Cutting, Drilling & Polishing

>>> Drill Bit JK

IP 1041DBJK



Available Size

9/64
5/16
3/16

>>> Cutting Disc

IP 1042CD



Available Brand

Yawata
Golden Tata
Yellow
Total
Tolsen
Crown
Ingco
Bosch
Thakita

>>> Grinding Disc

IP 1043GD



Available Brand

Yawata
Golden Tata
Yellow
Total
Tolsen
Crown
Ingco
Bosch
Thakita

>>> Hacksaw Blade

IP 1044HB



Description

Hacksaw Blade (6 inch)

Color

Black

Blue

Orange

>>> Anti-Cutter Frame & Blade

IP 1045ACF



Description

Blade Size 18mm

>>> Welding rod

IP 1046WR



Available Size

1.6 mm
2.0 mm
2.5 mm
3.2 mm
4.0 mm
5.0 mm

Available Brand

Linde
Vortic Merine
BSRM
SLM Merine
Lavana

>>> Series Paper

IP 1047SP



Material

Sand Paper, Silicon Carbide, Advanced Aluminium Oxide Silicon Carbide

Long service life, fast heat dissipation, provides high polishing efficiency

>>> Rubber Bush

IP 1048RB



Available Size

8mm hole
10mm hole
12mm hole
14mm hole
16mm hole
20mm hole

Consumable Items
(Ready Stock)

Hanging Support
(Clamps & Supporting)

Tools & Machineries
(Ready Stock)

Copper, Insulation
& Refrigerant

Make to Order

Others

Cutting, Drilling & Polishing

>>> Terpal

IP 1049TP



Available Size	Thickness
40' x 30'	450 gsm
30' x 30'	420 gsm
30' x 20'	400 gsm
27' x 21'	350 gsm
26' x 18'	300 gsm
24' x 18'	250 gsm
21' x 15'	
18' x 15'	
18' x 12'	
15' x 12'	
12' x 9'	
9' x 9'	

>>> Pop-Rivet

IP 1050PR



Available Size	Description
Blind 425	Aluminium & MS
Blind 450	
Blind 550	
Blind 650	

Paints, Glue & Instruments

>>> Berger Paint, Nippon Paints, Asian Paints, Diamond Paints

IP 1051P



Available Color
Off White
Light Grey
Signal Red
Red Oxide
Deep Orange
Coffee
Water Fall
Fresh Leaf
Lemon Yellow
Sky Blue

>>> Paint Brush

IP 1052PB



Available Size
1"
1.5"
2"
2.5"
3"
4"
5"

>>> Roller Brush

IP 1053RB



Available Size
4"
6"
9"

>>> Berger T6 Thinner

IP 1054BTT



Available Now
11L
2L
4L

>>> Jute Cloth

IP 1055JC



Available Color
Multi-Color
White

>>> Canvas Cloth

IP 1056CC



Color
Off-White

Electric Cables & Supporting

>>> Communication Cable

IP 1057CC



Available Brand
Partex
Meghna
SQ

>>> Cable Lugs

IP 1058CL



Description	Available Size
O Type, U Type, I Type	1.5 rm to 630 rm

>>> Electric Cable

IP 1059EC

Description	Available Brand
2 core, 3core, 4core	Partex
	Meghna
	SQ
	BRB
	Bizli
	RK



>>> Flexible Pipe

IP 1060FP



Available Size
15 mm
18 mm
25 mm
32 mm
40 mm
50 mm
60 mm
75 mm
100 mm
125 mm
150 mm
200 mm
250 mm
300 mm

>>> Cable Tie

IP 1061CT



Available Size	Available Color
4"	Multi-Color
6"	White
8"	Black
10"	
12"	
16"	

>>> Electric Pipe

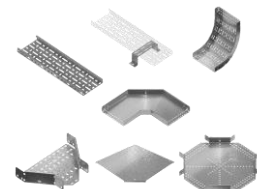
IP 1062EP



Brand	Description
RFL	25mm (White color)
Lira	
Hatim	

>>> Cable Tray

IP 1063CT



Description
Aluminium or GI
Color & Non Color

Consumable Items
(Ready Stock)

Hanging Support
(Clamps & Supporting)

Tools & Machineries
(Ready Stock)

Copper, Insulation
& Refrigerant

Make to Order

Others

Consumable Items
(Ready Stock)

Hanging Support
(Clamps & Supporting)

Tools & Machineries
(Ready Stock)

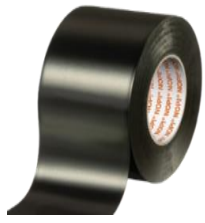
Copper, Insulation
& Refrigerant

Make to Order

Others

Adhesives & Tapes

>>> **Duct Tape**
IP 1064DT



Description
Long - 2, 2.7 inch
Thickness - 8,10 mm

>>> **Thread Tape**
IP 1065TT



Available Brand
Padrollo
A1
Madina
Perfect
N Poly
Gazi
Sharif

>>> **Electric Tape**
IP 1066ET

Available Brand
Tesa
Osaka
Deer
Super Star



>>> **Masking Tape**
IP 1067MT



>>> **Rock Wool**
IP 1068RW



>>> **Flexible Duct**
IP 1069FD



Description
Aluminium Foil

>>> **Foil Tape**
IP 1070FT



Description
With gum Or Without Gum

>>> **Low Noise Brown Packing Tape**
IP 1071BPT



Description
(48mm x 66M) - Schott Packaging

>>> **Wrapping Tape**
IP 1072WT



Description
Core Size- The inside roll diameter of a tape. Length- The length of the tape on the roll. Commonly measured in meters, yards, or feet. Width- The width of the tape on the roll. Commonly measured in millimeters or inches. Thickness- How thick tape is. It is commonly measured in mils (mille-inch), which is one-thousandth of an inch or 25.4 microns.

Tools & Machineries (Ready Stock)

Electrical

>>> Circuit Breaker

IP 1073CB



Description

6A, 10A, 16A, 32A, 63A

Bangla, China, Taiwan, USA, Indian

>>> Plug & Socket

IP 1074PS



Description

Two Pin, Three Pin, Industrial male Female Socket & Plug

>>> Distribution Box

IP 1075DB



Description

DB Box & SDB Box

>>> Grinding Machine

IP 1076GM



M/C Type

Bench Grinder Machine

Die Grinder Machine

>>> Welding Machine

IP 1077WM



M/C TYPE

ARC Welding Machine

MIG Welding Machine

TIG Welding Machine

>>> Tester

IP 1078TR



>>> Marble Cutter

IP 1079MC



>>> Room Temperature Meter

IP 1080RTM



>>> CMF meter Fluke 925

IP 1081CMF



Description

Electrical tools are tools used to work on an electrical system. These can include a wide range of tools such as wire and cable cutters, wire strippers, coaxial compression tools, telephony tools, wire cutter/strippers, cable tie tools, accessories, and even more. You need the right tools for many types of crimp connectors. We all know that the right tool can make all the difference when it comes to completing a project

Consumable Items
(Ready Stock)

Hanging Support
(Clamps & Supporting)

Tools & Machineries
(Ready Stock)

Copper, Insulation
& Refrigerant

Make to Order

Others

Electrical

>>> Double Gauge Pressure Meter

IP 1082DGPM



>>> Clamp Meters & Clamp Multimeters

IP 1083CM



>>> Combined Socket

IP 1084CS

Description
Anti-Corrosive & Anti Rust Metal
High-Quality PC & PA Plastic: Fire retardant
Switching compatibility more than 5,000 cycles

>>> Drilling Machine

IP 1085DM



>>> Matam

IP 1086M



>>> Laser Distance Meter

IP 1087LDM



>>> Slide Caliper

IP 1088SC



>>> Micrometer

IP 1089MM



>>> Multi plug socket

IP 1090MPS



Description

The IEC 309 MA range is a range of multipliers, adapters and branched. They are available in currents of 16, 32 or 63 A and have a varying number of outlets and poles in numerous different combinations. These products should be considered supplementary to the system as they are only suitable for use in temporary installations and mobile connections, and they have not been designed for permanent applications

>>> Floor Socket Industrial Multi Plug

IP 1091IMP

Parameter	Description
Panel Material	Brass alloy/Stainless steel
Surface finish	Wire drawing/Polishing/Spray painting
Panel Dimension(mm)	210*210
Cutout(mm)	198*198
Static pressure	1000N
Horizontal mounting	Horizontal installation
Sink box Material	Steel+Zinc plated
Hinged lid thickness	4MM
Base box dimension(mm)	200*130*85
Available modules	146*86panel(mm)



Consumable Items
(Ready Stock)

Hanging Support
(Clamps & Supporting)

Tools & Machineries
(Ready Stock)

Copper, Insulation
& Refrigerant

Make to Order

Others

Mechanical

>>> Combination Spanner

IP 1092CS

Available Size	Available Type of Spanner
6x7 mm	Ring & Open End Spanner
8x9 mm	Double Open End
10x11 mm	Ring Spanner
12x13 mm	
14x15 mm	
16x17 mm	
18x19 mm	
20x22 mm	
21x23 mm	
24x27 mm	
25x28 mm	
30x32 mm	



>>> Pipe Wrench

IP 1093PW



Description	Available Size
Bangla, China, Taiwan, USA, Indian	10"
	12"
	14"
	18"
	24"
	36"
	48"

>>> Ratcheting Wrench & Socket

IP 1094RWS

Description	Available Size
Bangla, China, Taiwan, USA, Indian	6x7 mm
	8x9 mm
	10x11 mm
	12x13 mm
	14x15 mm
	16x17 mm
	18x19 mm
	20x22 mm
	21x23 mm
	24x27 mm
	25x28 mm
	30x32 mm



>>> Adjustable Wrench

IP 1095AW



Available Size
4",6",8",10",11",12",16",18"

>>> Pliers

IP 1096P



Description	Available Size
Combination Plier	4"
Nose Plier	6"
Tongue & Groove Pliers	8"
Nail Puller Pliers	10"
Cutting Pliers	12"

>>> Screw Driver

IP 1097SD



Available Size	Description
4",6",8",10",11",12"	Flat & Star
	Bangla, China, Taiwan, USA, Indian

Copper, Insulation & Refrigerant

Copper, Insulation & Refrigerant

>>> Copper Pipe & Copper Straight Pipe

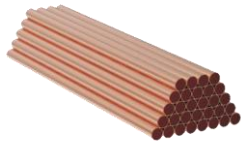
IP 1098CP

Brand	Available Size	Thickness
Copper Tech	1/4" / 6.35 mm	0.8 mm
Mollar	3/8" / 9.52 mm	0.8 mm
TNS	1/2" / 12.7 mm	0.8 mm
	5/8" / 15.87 mm	0.8 mm
	3/4" / 19.05 mm	0.8 mm
	7/8" / 22.22 mm	0.9 mm
	1" / 25.4 mm	0.9 mm
	1-1/8" / 28.57 mm	0.9 mm
	1-1/4" / 31.75 mm	1.2 mm
	1-3/8" / 34.92 mm	1.2 mm
	1-1/2" / 38.1 mm	1.2 mm
	1-5/8" / 41.27 mm	1.2 mm
	1-3/4" / 44.45 mm	1.2 mm
	2" / 50.8 mm	1.2 mm
	2-1/8" / 53.97mm	1.3 mm



>>> Straight Pipe

IP 1100SP



>>> Copper Insulation

IP 1103CI

Brand	Available Size
Superlon	1/4" / 6.35mm
	3/8" / 9.52mm
	1/2" / 12.7mm
	5/8" / 15.87mm
	3/4" / 19.05mm
	7/8" / 22.22mm
	1" / 25.4mm
	1-1/8" / 28.57mm
	1-1/4" / 31.75mm
	1-3/8" / 34.92mm
1-1/2" / 38.1mm	



>>> Refrigerant R-410a

IP 1105RR



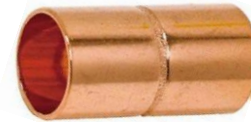
>>> Copper Pipe Elbow

IP 1099CPE



>>> Copper Socket

IP 1101CS



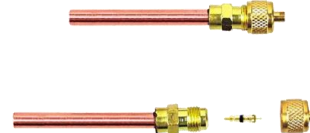
>>> Brazing Rod

IP 1102BR



>>> Non Return Valve - For AC

IP 1104NRV



Available Brand

Kalton, SSB, Forean, Refrigerant, Cooltop

Consumable Items
(Ready Stock)

Hanging Support
(Clamps & Supporting)

Tools & Machineries
(Ready Stock)

Copper, Insulation
& Refrigerant

Make to Order

Others

Make to Order

Air terminals

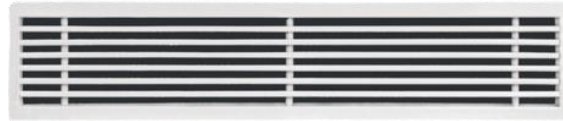
>>> Air Rod Terminal Base

IP 1106ARTB



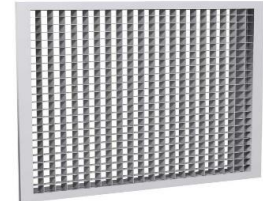
>>> Linear Bar Grilles

IP 1107LBG



>>> Egg Crate Grill

IP 1108ECG



>>> Four Way Diffuser

IP 1109FWD



>>> Square Duct

IP 1110SD



Description	Categories
<p>Ideally used for comfort cooling applications of supply and return air for HVAC projects. Fabricated from prime grade Galvanized Iron (GI) sheets using state-of-the-art automated machinery. The duct construction has fully complied with International Duct Construction Standards SMACNA and DW/144.</p>	<p>HVAC Ducts, Rigid Ducts, Sheet Metal Ducting</p>

>>> Ventilation Round Duct

IP 1111VRD



Usage	Product Type	Material
Industrial	Ventilation Round Duct	Other, Metal

>>> Fire Door

IP 1112FD

Description

Custom sizes are available (Contact our Technical Team to find out more about the maximum sizes available for fire rated door sets).



Others

Others

>>> Electric Conduit Pipe

IP 1113ECP



>>> Silicon

IP 1114S



Available Brand	Description
V Tech	Clear, White, Black
Super Seal	Clear, White, Black
OCI	Clear, White, Black
Silock	Clear, White, Black
Dolphin	Clear, White, Black

>>> Aica

IP 1115A

Available Brand

Swan, Dico, Bulbond, Fevicol



>>> Foam Gasket Tape

IP 1116FGT



>>> Rubber Gasket

IP 1117 RG



>>> Rubber Gasket Sheet

IP 1118RGS



Available Size

3 mm
5 mm
10 mm
15 mm
25 mm

>>> Upvc Gum & Solution

IP 1119UGS



>>> Upvc Drain Pipe

IP 1120UDP



Available Brand

RFL
N Poly
Jamuna
Gazi
Bengal
Hatim

>>> Upvc Elbow

IP 1121UE



Available Brand

RFL, Jamuna, Gazi, Bengal, Hatim, Npoly

Consumable Items
(Ready Stock)

Hanging Support
(Clamps & Supporting)

Tools & Machineries
(Ready Stock)

Copper, Insulation
& Refrigerant

Make to Order

Others

Others

>>> Upvc Tee

IP 1122UT



>>> Upvc Reducer

IP 1123UR



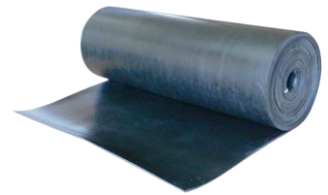
>>> Glass Wool

IP 1124GW



>>> Nitrile Rubber

IP 1125NR



Available Brand

RFL, Jamuna, Gazi, Bengal, Hatim, Npoly

Description

Without Foil, Self-Adhesive & With Foil, Self-Adhesive (Black)

>>> Pe Foam with Aluminium Foil

IP 1126PF



Description

One Side & Both Side (White Jumbo)

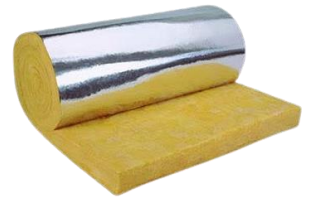
>>> Reducer Tee

IP 1127RT



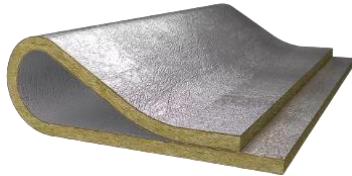
>>> Rock Wool

IP 1128RW



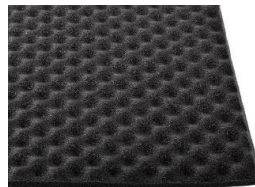
>>> Duct Acoustic Insulation

IP 1129DAI



>>> Acoustic Lining

IP 1130AL



Description

Armacell & Superlon (Black)

>>> Cork Sheet

IP 1131CS



>>> Adhesive Cork

IP 1132AC



Description

Package Includes 8 pack self-adhesive cork, measures A4 Size about 21x30cm/8.26x11.81inch, 1mm thick.

A

Product Name	Technical Specification
Anchor Or Hilty Royal Bolt	MS but SS color
Anchor Or Hilty Royal Bolt	Full SS
Asian Paints	All Color
Asian Thinner	Product of Asian
Adjustable Wrench	
Arc Welder Machine	
Aluminium Sheet	
Acoustic Lining	
Aluminium U Chanel	
Aica	
Ampear Meter	

B

Product Name	Technical Specification
Bolt	MS Galvanized
Bolt	SS
Berger Paint	All Color
Berger Thinner	Product of Berger
Bench Grinder Machine	
Brazing Rod	

C

Product Name	Technical Specification
Cot Screw with foam washer (MS)	Golden Or SS Color
Cot Screw with Rubber washer (MS)	Golden Or SS Color
Cot Screw with plastic washer (MS)	Golden Or SS Color
Cutting Disc - Diamond	Bangla/China/Korean/USA
Cutting Disc Cutter Wheel	Bangla/China/Korean/USA
Canvas Cloth	China / Bangla
Cable Tai	China / Bangla
Communication Cable	All Bangladeshi Brand
Cable Lugs	U Type, O Type, I Type
Cable Tray	Color or Without Color
Combination Spanner Double	With Set
Circuit Breaker - 6A	
Circuit Breaker - 10A	
Circuit Breaker - 16A	
Circuit Breaker - 32A	
Circuit Breaker - 64A	
CMF meter Fluke 925	
Copper Pipe / Coil Pipe	
Copper Pipe Elbow	
Copper Pipe Socket	
Copper Insulation	

D

Product Name	Technical Specification
Drill Bit - Hammer Bit Or Wall Bit	MS Or SS
Drill Bit - Iron	MS Or SS
DIAMOND Paints	All Color
Diamond Thinner	Product of Diamond
Distribution Box	
DB Box	
Die Grinder Machine	
Double Gauge Pressure Meter	
Duct Tape	Long - 2, Thickness - 8mm
Duct Tape	Long - 2.7, Thickness - 10mm
Duct Insulation	

E

Product Name	Technical Specification
Electric Cable	All Bangladeshi Brand
Electric Pipe	All Bangladeshi Brand
Electric Tape	
Egg Crate Grill	

F

Product Name	Technical Specification
Flexible Electric Pipe	
Foil Tape	
Flexible Duct	
Foam Gasket Or Rubber Gasket Or Pad	
Four Way Diffuser	
Flat Bar	ABS, NON ABS

G

Product Name	Technical Specification
Grander Machine	
GI Ware	
GI Mesh	
Glass Wool	
Gp Sheet	

H

Product Name	Technical Specification
Hose Clamp	SS
Hose Clamp	MS Galvanized
Hacksaw Blade	Black / Blue / Orange Color

J

Product Name	Technical Specification
Jute Cloth	Color Jute (Big & Small Size)
Jute Cloth	White Jute (Big Or Small Size)

M

Product Name	Technical Specification
MS Nut Bolt Or MS Joint Nut Bolt	Golden Color
MS Nut Bolt Or MS Joint Nut Bolt	SS Color Or Galvanized
MS Royal Bolt	Golden Body & Golden Cover
MS Royal Bolt	Black Body & Golden Cover
MS Welding Rod	3.2mm (10no) Or 2.5mm (12no)
Marble Cutter Machine	
MIG welding machine	
Masking Tape	
MS Angle	BSRM, VSL, Rahim SSL

N

Product Name	Technical Specification
Nut	MS Galvanized
Nut	SS
Nippon Paints	All Color
Nippon Thinner	Product of Nippon
Nitrile Rubber	

P

Product Name	Technical Specification
Pop Revit - Aluminium	Bangla Or China
Pop Revit - MS	Bangla Or China
Paint Brush	Bangla Or China
Pliers	
Pp Belt	
Pp Clip	
PP Belt Carton Strapping Machine	
Pe Foam with Aluminium Foil	

W

Product Name	Technical Specification
Washer	SS Color Or Galvanized
Washer	Plastic
Washer	Rubber Or Gasket Washer
Wrapping Tape without gum	

R

Product Name	Technical Specification
Refrigerant R-410a	
Ruping Screw without washer (MS)	Golden Or SS Color
Royal Plug - Bangla	Medium Or Heavy
Royal Plug - China	Medium Or Heavy
Rubber Bush	Tapper Or Level
Roller Brush	Bangla Or China
Ratcheting Wrench	With Box Set
Ratcheting Wrench socket	With Box Set
Room Temperature Meter	

S

Product Name	Technical Specification
SS Nut Bolt	SS Color
SS Royal Bolt	SS Color
Swivel Loop Hanger Or Pepe Clamp	MS but SS color
Swivel Loop Hanger Or Pepe Clamp	Full SS
SS Welding Rod	3.2mm (10no) Or 2.5mm (12no)
Series Paper	China Or Bangla
Screw Driver	
Silicon	
Supply Linerber Grill	

T

Product Name	Technical Specification
Thread Rod	MS but SS color
Thread Rod	Full SS
TESTER	
Two Pin Plugs	
Three Pin Plugs	
Two Pin Socket	
Three Pin Socket	
TIG welding machine	
Thread Tape	

U

Product Name	Technical Specification
U BOLT & U CLAMP	MS but SS color
U BOLT & U CLAMP	Full SS
Unifix	Bangla SS
Unifix	China SS





HADID GLOBAL LIMITED

Corporate Office

House # 02 (1st Floor), Road #12/A
Sector # 10, Uttara, Dhaka-1230

Showroom

Shop no 41, Majed Sarder Tower # 01 Hazi Osman
Gani Road, Alu Bazar, Nawabpur, Dhaka-1100

Phone: 01325074100

Email: hadidglobalbd@gmail.com

Please visit our website for the upload version of our catalogues

www.hadidglobal.com.bd

